

Christmas shopping ideas

Why go further than Woodburn for Christmas gifts?
Here are just some of the gifts that you can find in town...

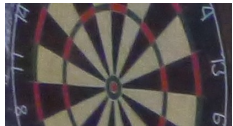


Mainly for grown ups

Barbecue set | Books | Bottle of bubbles or favourite liqueur
Calendars | Candles and candle holders | Caps and hats
Breadboards | Old and new clothing | Condiments | Humorous
or decorative cups and mugs | Cushions | Dinner and lunch
vouchers | Hairclips | Ready-made hampers or build your own



Handbags | Jams, relishes and sauces | Jewellery | Key rings
Magazine subscriptions | Salt & pepper shakers | Table mirrors
Novelty wine rack | Wind chimes | Fishing lures | Garden
ornaments | Indoor ornaments | Paintings and pictures | Photo
frames | Placemats | Plants | Rain gauge | Records | Speciality
soaps | Sunglasses | Second-hand furniture | Speciality tea and
coffee | Stubby holders | Bush spices | Teapots | Ties | Thongs
T-shirts | Storage boxes | Vases | Wine glasses and tumblers



For the young and young at heart

Balls, bats and rackets | Books | Games | Kites
Decorative mobiles | Drawing books | Model motorbikes
Musical box Puzzles | Soft toys | Swimming floats



SAVE THE DATE

First General Meeting for 2016

5.30 pm on Monday, 1 February—details to come

This newsletter is printed on 100% recycled paper.

President's message



On behalf of the Chamber Committee, as 2015 draws to a close we farewell all who have departed our town this year and wish you well in your endeavours. We also welcome all newcomers and look forward to getting to know you more in 2016. Congratulations to all who have achieved their personal and business milestones during the year. And thank you to all who have contributed their time and energy to the prosperity and well-being of our town. We wish you all a safe and merry Christmas and New Year and look forward to a happy and prosperous 2016 for all .

Daniel Simpson
President

Member update

The Committee of Management has held several meetings over the last few months, largely bringing new committee members up to speed. The following highlights are the most newsworthy outcomes from those meetings. Regular updates will be provided in future newsletters.

- The Chamber will have bi-monthly general meetings in 2016 with various formats, including breakfast and after-hours meetings, “show and tell” meetings, brainstorming “shovel ready” projects for funding, guest presenters, etc.
- The Chamber should maintain its focus on the three core projects identified through community consultation, including attracting a new GP, identification of projects for town beautification and participation in the Bypass Action Group.
- The Committee would undertake further member consultation on the Constitution before finalising it.
- The Chamber has provided sponsorship for the Woodburn Riverside Festival and Carols by Candlelight.
- The Chamber will change to a July-June financial year to bring it into line with the industry standard. This will mean that two Annual General Meetings will be held in 2016.
- Members will be invited to write “Member segments” in future Chamber newsletters.
- The Committee accepted the 2014 financial statements prepared for the Chamber by Baker Farlow.

Don't miss a newsletter! For an electronic copy of future newsletters, email [SUBSCRIBE to info@woodburnchamber.com.au](mailto:SUBSCRIBE@woodburnchamber.com.au)



A voice for our community

December 2015 Edition

In this edition:

Carols by Candlelight 2016
President's message
Member update
Visions of Woodburn—caravan park and amphitheatre
Christmas shopping in Woodburn
SES Exercise BizSafe

Carols by Candlelight

6-9pm, Saturday, 12 December 2015

The Woodburn SES will fire up the barbecue at 6 pm. Carol singing will start at 7 pm, with music provided by 'Diamond Duo'. Local school choirs will perform during the evening and it is rumoured that a certain gentleman in a red suit will pay a visit. 'Candles' will be on sale.

If the weather is inclement, the event will be held in the Woodburn Memorial Hall.

This traditional evening is organised by the
Woodburn Event Team

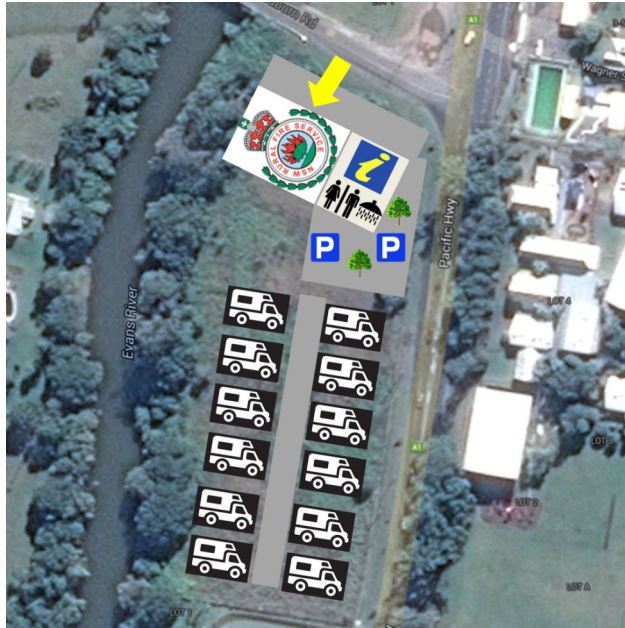
and sponsored by Richmond Valley Council
and the Woodburn Chamber of Commerce.



Here we've tried to capture two ideas for Woodburn submitted by residents. **Please note** that these are "ideas in the raw" - any proposals will undergo thorough consultation with local businesses and residents.

Thanks to everyone who has submitted ideas so far. Send your ideas to info@woodburnchamber.com.au.

Woodburn Caravan Park

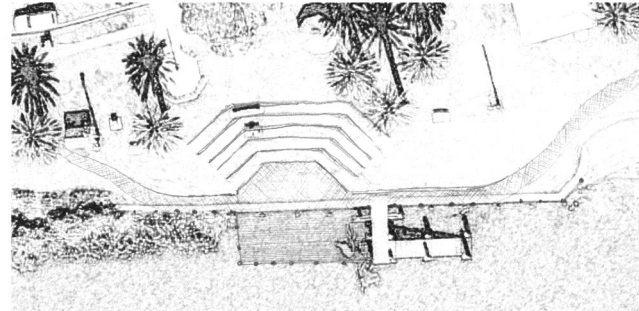


Norm Veigel writes, "After travelling this great country many times over the years and speaking to many others doing the same thing, free and low-cost camping is one of the greatest requirements people are looking for". A caravan park has often been suggested for the block opposite the public school and Norm supports this. As it is a short walk to town, he states that businesses will benefit, with visitors visiting the town for meals, groceries, gas, the laundromat, and so on. Several people have suggested the site for a new RFS facility, and Norm sees room for this and a new Visitor Information Centre with plenty of parking for day visitors. Norm's ideas include a coin or credit-card operated shower and toilet block, and a maximum 24-hour or 48-hour stay.

Importantly, Norm believes that Woodburn should invest in such a facility as soon as possible, as word will travel through camping social media. He believes that leaving it until after the bypass is completed will be too late to have maximal impact. Thanks for your thoughts, Norm and Ruth!

Visions of Woodburn...

Woodburn Park amphitheatre and stage



Several people have talked about an amphitheatre in the park, including Tony McGeary. Tony's vision is to have an amphitheatre and a deck next to the wharf that can support an elevated stage. These would be attractive and useful all the time, not just for events. For example, the steps of the amphitheatre would be wide enough to spread a picnic blanket, and facilitate people's enjoyment of the river.



This amphitheatre is similar in scale to Tony's vision, with room behind to add demountable seating for larger events.

the amphitheatre would be grassed and the stage would be made of timber, strong enough to withstand impact from boats. Attractive fencing may be necessary for safety.

Tony sees the area as a great venue for live music including mini music festivals, Carols by Candlelight, live theatre and open-air cinema, and functions from weddings to outdoor lectures, to a judging and presentation area for sporting events.

Tony feels that an avenue for construction of these facilities may be through arts and culture funding. Thanks for your thoughts, Tony!



This example is bigger in scale to Tony's vision, but this captures the mood.

SES Exercise BizSafe

I peered out the front door after the November storm, but couldn't see anything. Then I realised, I couldn't see *anything*. Chairs, table, shoes, everything had been blown off the veranda! On Saturday, 17 November 2012, we had watched the lightning approach

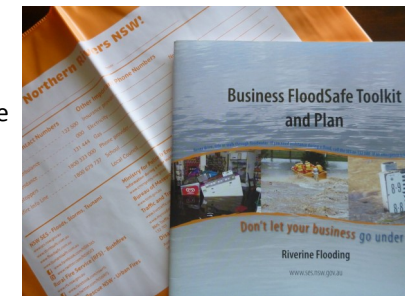


with awe, but hadn't anticipated the destructive winds. We were lucky - our garden was a mess, but we had relatively little property damage.

It was a wake-up call though, and I was keen to attend the SES Exercise BizSafe workshops held at the Rod 'n' Reel on the 3rd anniversary of the storm.

Jim McCormack, SES Controller for Woodburn, brought us to attention with some simple statistics. The March '74 flood reached 4.88m, with people standing in River Street up to their knees in water. The February '54 flood reached 5.27m. The Probable Maximum Flood or "PMF" level is 8.4m!!

Janet Pettit, Community Engagement Officer for the SES, then took us through three scenarios to respond to an east coast low bearing down on the Northern Rivers, from flood watch to evacuation to post-flood. Participants came up with great preparatory and responsive actions, such as checking roof bolts during routine maintenance, or identifying the most valuable stock to lift out of flood reach.



Don't put off your flood planning any longer - call Janet on 6625 7700 for a copy of the Business FloodSafe Toolkit and Plan and check out online resources at www.floodsafe.com.au.

Thanks to Janet and everyone who organised this informative and well-attended event.